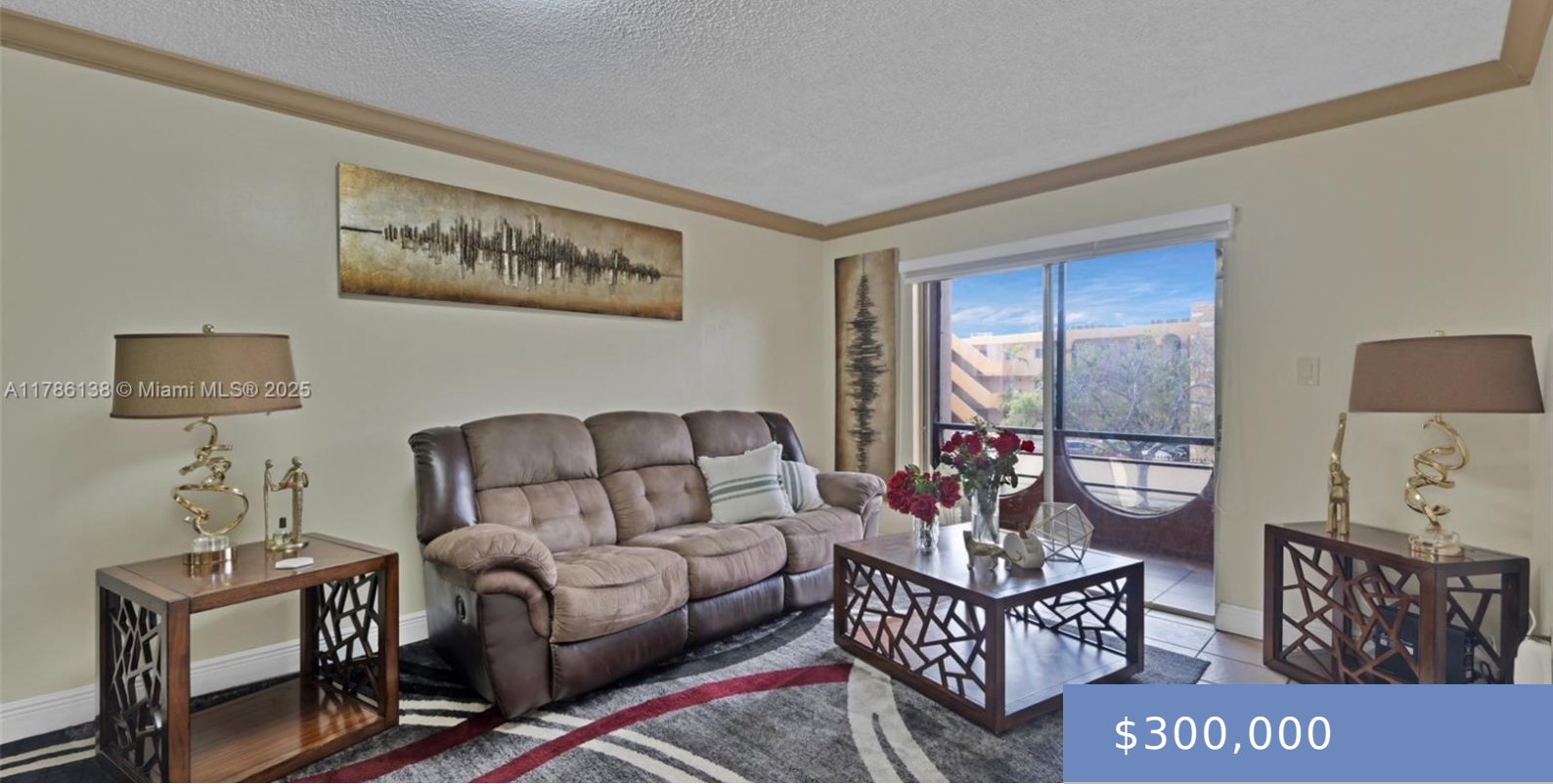


A11786138 © Miami MLS® 2025



\$300,000

4670 13TH LN, HIALEAH, FL, MIAMI-DADE COUNTY, 33012

<http://avivaestate.com>

Spacious 3-bedroom condo in the well-established Westland South community. This well-maintained unit features tile flooring throughout and a functional layout with ample living space. WD in unit. The building is currently undergoing facade renovations, adding to its long-term value and curb appeal. Residents enjoy access to a fitness center, community room, landscaped pool area, and [...]

- 3 beds
- 2 baths
- Residential
- Condominium
- Active
- 1378 sq ft



Building Details



Room Master Bathroom Features: Other

Pets Allowed: No

Subdivision Name: WESTLAND SOUTH CONDO

Entry Level: 2

Virtual Tour URL:

<https://www.propertypanorama.com/instaview/mia/A11786138>

Building Type: Condo 1-4 Stories, Condo

Parking Features: 1 Space, Additional Spaces Available

Security Features: Complex Fenced

Stories Total: 5

Flooring: Ceramic Floor

View: Other View

Amenities & Features

Patio & Porch Features: Open Balcony

Heating: Central, Electric

Architectural Style: Corner Unit

Cooling: Central Air, Electric

