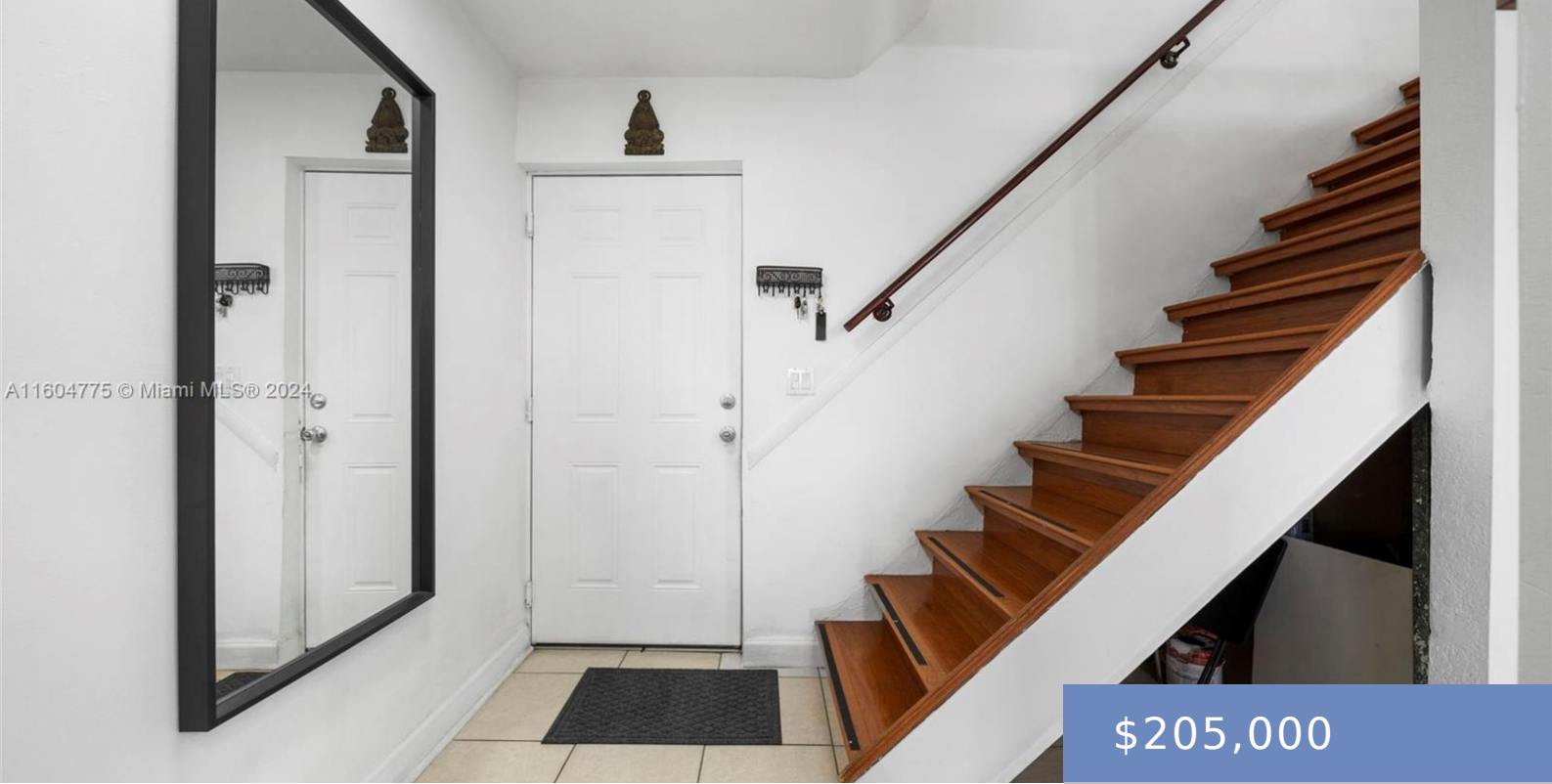


A11604775 © Miami MLS® 2024



\$205,000

30 11TH AVE, MIAMI, FL, MIAMI-DADE COUNTY, 33130

<http://avivaestate.com>

CENTRAL LOCATION, VERY CLOSE TO DOWNTOWN, BRICKELL, CORAL GABLES, BEACHES. SHORT DISTANCE TO SUPERMARKETS, BUS STOP, SHOPPING CENTERS.

- 1 bed
- 1 bath
- Residential
- Condominium
- Active
- 723 sq ft



Building Details



Room Master Bathroom Features: Other

Pets Allowed: Maximum 20 Lbs

Subdivision Name: MIRAMAR TERRACE CONDO

Entry Level: 2

Virtual Tour URL:

<https://www.propertypanorama.com/instaview/mia/A11604775>

Building Type: Condo 1-4 Stories, Condo

Parking Features:

Detached
Carport, 1 Space

Security Features: Other

Stories Total: 2

Flooring: Vinyl

View: Garden
View

Amenities & Features

Heating: Central

Cooling: Central Air

